

Delivering the Future of Secure Connectivity



A revolutionary new network as a service (NaaS) designed from the ground up to offer always-on availability with high performance coverage and capacity, and superior security. Intended for organizations who believe owning and operating a network is no longer in their strategic interests.

Nile Delivers...

- > Connectivity backed by strict SLAs for availability, coverage, and capacity
- > A high-performance experience throughout your buildings and sites
- > Network simplicity unlike you've ever seen — owned and operated entirely by Nile
- > Unparalleled security integrated throughout the Nile service
- > Wrapped in a simple and predictable pay-as-you-go subscription service

Nile delivers a NaaS experience rich in performance, secured inside and out, and free of burden.

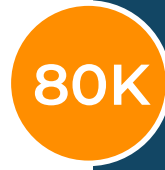
Nile has developed a breakthrough new service that delivers secure connectivity for your local area network. Built on the principles of ultimate simplicity, ruthless automation, and inherent security, Nile's SLA-backed service ensures always-on availability, high-performance capacity, with guaranteed coverage that evolves at the speed and pace of your business.

This unwavering approach to secure connectivity has never been more essential. Our lives, businesses, schools, hospitals, research facilities—we're rooted in an ability to quickly and reliably connect people, devices and the many applications necessary to support our individual missions. These connections are increasingly more difficult to manage on networks overburdened with complexity. Complexity has been countered with heavy operational investment—with the average organization now spending as

WHY IS IT TIME FOR MAJOR CHANGE...



Of IT's time is spent on tactical issues—30% on reactive troubleshooting, 27% is spent actively trying to prevent problems by monitoring operations and capacity management.



Number of service partners bred from an industry that has let complexity run largely unchecked for decades.



Percentage of issues experienced in the network stemming from Human and process errors.



Percentage of all breaches where human error was a major contributing cause.

* Sources: Gartner, Enterprise Management Association, Information Technology Intelligence Corps, IBM Cyber Security Intelligence Index Report

much as \$3 in supportive operational expenses each year for every \$1 spent in networking technology – to maintain the basics. Mitigating this complexity pulls IT from high-value added tasks and keeps organizations from investing in what matters most—driving business transformation, and innovation.

From day one, Nile empowers IT teams and leaders. By providing this service to organizations and end-users, Nile enables exceptional user experiences, while intelligently allocating human resources that drive innovation and creates a critical competitive advantage—all while putting IT teams where they belong: in the boardroom, strategizing future innovations, alongside C-suite leaders and decision makers.

from chaos to **simplicity**

A steadfast commitment to the highest service levels; an assurance that when it comes to keeping you securely connected—**we've got you covered.**

- **Always-on availability.** The first of our three primary SLAs, provides assurance that your connectivity maintains the highest levels of security, reliability, and resilience to continuously support your business.
- **Uncompromising coverage.** Never question whether your network is keeping pace. You'll receive the highest voice and video coverage throughout the Nile service area. Our sensors will closely track coverage, our second SLA, to ensure your connectivity continually adapts to support your ever-evolving needs.
- **High performance capacity.** We build each Nile service with our own proprietary technology to make sure your capacity, our third SLA, delivers the highest data rates. Rates are monitored continuously and when necessary, Nile will deploy additional capacity to maintain that premium service experience.

YOUR NILE SERVICE INCLUDES

The Nile subscription is a full-service experience that encompasses your complete lifecycle—from initial planning and site survey, through installation and ongoing management. Fees are based on a simple pay-as-you-go model—tied simply to how many people are on your network. Moving to a hybrid work model, fees are automatically adjusted as your usage changes. In addition, each subscription includes a Nile Customer Success Manager to ensure you have a ready resource to help with any ongoing planning or support related matters. **A complete white glove service, end-to-end.**



visit nilesecure.com for more information

DESIGNED FOR EXTREME SIMPLICITY

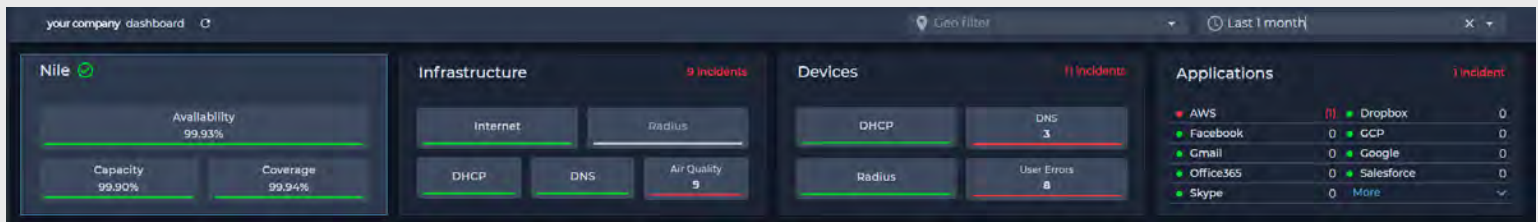
Nile's service was built on three core principles — eliminate the issues that regularly impact network stability; remove any need for configuration; and whenever possible simplify technology. The result—**Nile requires zero documentation and zero training to setup a new service while offering unrivaled stability.**

Software upgrades, patches, or critical security firmware update can often be problematic for organizations to respond to quickly without impacting service. The Nile service was engineered to complete the updates and upgrades with no disruption to your service. This not only takes a massive burden off in-house IT teams but ensures your Nile service is working with the most current software and security firmware.

BUILT WITH RUTHLESS AUTOMATION

Once we eliminated and simplified the core issues that impact stability, we then set about automating everything else. Nile's service is supported by a network of sensors that provide a continuous, 360° view of the service, and overall user experience. In addition, we built deep instrumentation into every hardware and software element within the Nile architecture to maintain constant visibility. This data is sent in real-time to the Nile cloud where AI/ML—based softbots apply deep analysis to look for potential issues before they arise. If detected, our automation will fine tune the service to ensure our service meets or exceeds committed service levels.

At all times you have full visibility of your Nile service. The Nile Service Portal allows you to not only track the health of your Nile service—presenting a complete view of your availability, coverage, and capacity—but also gives real-time insight into issues outside of the Nile service—including health of the internet, devices, and top applications.



The Nile Customer Portal provides a real-time view into the Nile SLAs, along with insights related to the health of your infrastructure, devices and applications.

ENGINEERED FOR TOTAL SECURITY

From the very first days of Nile came a view that to offer secure connectivity we must take a much broader, more holistic approach than ever taken before. Automating the process of updating the Nile service with the latest security firmware—removing configurations, and with it, the potential for human error—were critical first steps. But it didn't end there. We implemented zero trust access capabilities to ensure no unauthorized devices can connect to the network. Users are grouped based on their identity and all policies for access are maintained at your firewall for centralized policy management. We also implemented zero trust network capabilities to ensure only Nile devices can communicate with other Nile devices. We implemented MACsec to encrypt all traffic within the Nile service. Our segmentation model allows you to control and evolve your security policies in line with a zero trust model. And we enforce that segmentation within the Nile service, to secure against the lateral movement of malware from infected devices.

These are just some of the innovations behind the Nile service. Each designed to play a crucial role in our ability to deliver on the industries most advanced SLAs for availability, coverage, and capacity. And in doing so, realizing our vision that connectivity should be secured and delivered as simply and reliably as electricity.



visit nilesecure.com for more information