

nile

---

# Nile Edge Service

**A Modern Approach to Secure  
Internet and Cloud Connectivity**

**nilesecure.com**

In today's cloud-first world, most corporate and branch offices no longer require highly sophisticated WAN infrastructures. With enterprise traffic flowing primarily to the internet and cloud—not backhauled to a central data center—the priority is secure, reliable internet access without the cost and complexity of traditional firewalls, routers, or SD-WAN solutions.

That's where the Nile Edge Service comes in. As an extension of the Nile Access Service, Edge Service adds internet and cloud connectivity to the same AI-automated platform that already delivers wired and wireless access and built-in Zero Trust security.

Together, Nile Access and Edge Services replace overbuilt WAN and internet edge infrastructures and the challenging operations required to manage them. No more standalone routers, firewalls, or SD-WAN appliances. Just a fully integrated service that makes it easier to connect and secure remote offices, retail sites, and distributed teams.



## Why Internet Access Needs Rethinking

Providing internet and cloud access to the wired and wireless LAN has become unnecessarily complicated. Traditional SD-WAN and WAN edge solutions rely on multiple dedicated devices, overlays, and feature-heavy platforms—many of which go unused at smaller sites. The result? Higher costs, longer deployment cycles, poor security, and more operational complexity than most organizations actually require.

Operations teams are left managing a stack of hardware that includes routers, firewalls, and SD-WAN appliances, often for sites with minimal IT support. Each new location adds provisioning effort, configuration overhead, and potential policy inconsistencies.

At the same time, security remains costly and inconsistent across sites. That's why many organizations are adopting Secure Service Edge (SSE) platforms to handle threat prevention, inspection, and filtering in the cloud. Yet much of the on-site security stack still has to be deployed, maintained, and supported, despite adding little value in SSE-enabled environments.

The current model wastes time, budget, and admin resources, especially for organizations that simply want a faster, more efficient way to connect their offices to the internet and cloud.

## Nile Edge Service

The Nile Edge Service enables organizations to securely connect the Nile Access Service to the internet, cloud, and private data center resources without the overhead of traditional SD-WAN. It also optimizes application performance based on business priorities—enforced through a unified policy framework where Zero Trust access and traffic prioritization are defined together, without complex configuration.

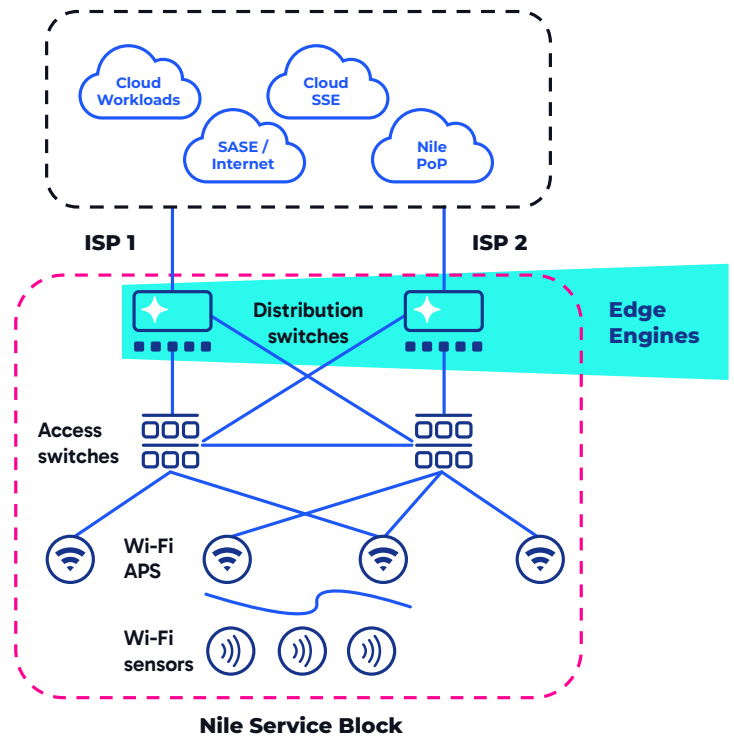
Paired with the Nile Access Service, Nile Edge Engine software operates at the Nile Service Block distribution layer and delivers a unified, full-stack NaaS model that combines LAN, WLAN, WAN edge connectivity, and security into a single service.

Ideal for organizations where internet/cloud redundancy and network security are paramount, the Nile Edge Service simplifies operations by eliminating the need for standalone routers, firewalls, or SD-WAN devices. The setup is simple with no unnecessary features—only dependable, secure access to internet and cloud applications.

This architecture reflects a modern approach to LAN connectivity—one that prioritizes simplicity, security, and flexibility over the complexity of legacy WANs. Rather than relying on MPLS circuits or over-engineered WAN overlays, it uses internet as the sole transport to provide secure access to cloud applications, internet services, and, when needed, private data centers via site-to-site VPN. It's a lightweight, cloud-delivered model that seamlessly integrates with Secure Service Edge (SSE) platforms, making it ideal for distributed sites that need performance without the operational overhead.

The Nile Edge Service gives organizations a more efficient way to connect and secure smaller sites, featuring built-in traffic optimization, identity-based policy enforcement, and integrated management from day one. Key advantages include:

- **Operational Simplicity** - Eliminates the need for standalone edge routers, firewalls, and SD-WAN hardware with a software-delivered model that streamlines network deployment and management.
- **Integrated Security** - Provides agentless, identity-based Zero Trust security by default, with optional integration for organizations using Secure Service Edge (SSE) platforms.
- **Faster Time to Value** - Accelerates setup and ongoing operations through automation, with no manual provisioning or day-to-day operational overhead.
- **Predictable OpEx** - Replaces CapEx-heavy infrastructure with a subscription model that includes built-in support and performance accountability.







## Solving Day-to-Day Connectivity Challenges for IT Teams

Managing network connectivity across dozens—or even hundreds—of remote sites is a constant challenge. Traditional SD-WAN deployments require hands-on provisioning, ongoing maintenance, and complex coordination across multiple hardware and software components. The Nile Edge Service removes that burden by simplifying how admins connect, secure, and manage network locations—all through a centralized platform.

- **Zero Configuration** - New locations go online without manual setup or on-site help. Nile Infrastructure self-registers, enforces policies automatically, and is monitored from day one—no CLI or staging needed.
- **Hardware Silos Eliminated** - No need to manage separate appliances for routing, security, and WAN optimization. All functionality is delivered via a cloud-managed platform as-a-Service with no patchwork updates.
- **Built-in Visibility and Policy Control** - Admins gain centralized control over LAN, WLAN, and WAN policies, applied consistently across every site. Performance monitoring, identity-based access control enforcement, and bandwidth priorities are optimized—all from a single interface.
- **Adaptive Traffic Optimization** - Prioritizes business-critical applications and adapts to real-time ISP link conditions to optimize performance for business-prioritized applications.
- **Built for SSE-Driven Architectures** - Integrates cleanly into SSE-first environments by forwarding customer-specified traffic to the cloud for inspection and enforcement—no need to replicate filtering and inspection at every location.

## A Future-Ready Edge

The Nile Edge Service offers a consistent operational model, eliminating excessive cost and complexity while bolstering security. Organizations relying on edge routers, firewalls, or SD-WAN appliances often find these solutions overly engineered for today's cloud-first needs. For those looking to simplify operations—or already leveraging or exploring SSE platforms—the Nile Edge and Nile Access Services offer a modern, fully integrated alternative.

By unifying connectivity, security, and operations into a single service, it empowers IT teams to deploy and manage wired and wireless LANs and internet/cloud connectivity with speed and confidence, delivering a streamlined experience that's aligned with today's cloud-first priorities.

This unified approach gives organizations the power to scale with precision and control, laying the groundwork for a more secure, agile, and cloud-optimized full-stack wired and Wireless LAN architecture.

